



Schaalhoorn

The background features a vertical gradient from light green at the top to dark blue at the bottom. It is decorated with faint, semi-transparent technical diagrams. On the right side, there is a large circular gauge with numerical markings from 80 to 200 and a central needle. Below it is another circular diagram with concentric circles and arrows. On the left side, there are smaller circular diagrams, some with arrows indicating direction.



Steenuil

The background features a vertical gradient from light green at the top to dark blue at the bottom. It is decorated with faint, semi-transparent technical diagrams. On the right side, there is a large circular gauge with a scale from 0 to 200 and a needle pointing towards 180. Below it is another circular diagram with concentric circles and arrows. On the left side, there are smaller circular diagrams, one with a dashed arrow pointing left and another with a solid arrow pointing right.





Aalbes



The background is a blue gradient with faint technical diagrams and circular patterns. On the right side, there are several circular gauges or dials with numerical scales (e.g., 100, 110, 120, 130, 140, 150, 160, 170, 180, 190, 200) and arrows. There are also dashed lines and solid lines forming circles and arcs. The overall aesthetic is technical and futuristic.

Heermoes



The background is a blue gradient with faint technical diagrams and circular patterns. On the right side, there is a large circular diagram with concentric circles and radial lines, resembling a gauge or a scale. The numbers 100, 110, 120, 130, 140, 150, 160, 170, 180, 190, and 200 are visible along the outer edge of this diagram. There are also smaller circular diagrams and dashed lines scattered across the background.

Zwarte bes





Haring



Blaaswier

The background features a vertical gradient from light green at the top to dark blue at the bottom. It is decorated with faint, semi-transparent technical diagrams. On the right side, there is a large circular gauge with numerical markings from 80 to 200 and a white needle pointing towards the 180 mark. Below it is another circular diagram with concentric circles and arrows. On the left side, there are partial views of similar circular diagrams.



Hondshaai

The background features a vertical gradient from light green at the top to dark blue at the bottom. It is decorated with faint, semi-transparent technical diagrams, including circular gauges with numerical scales (e.g., 100, 110, 120, 130, 140, 150, 160, 170, 180, 190, 200) and arrows, suggesting a scientific or engineering theme.



Geknikte vossenstaart

The background features a blue-to-green gradient with faint technical diagrams. On the right side, there is a large circular gauge with numerical markings from 100 to 200 and a white arrow pointing towards the top-left. Below it, another circular diagram shows concentric dashed lines with a white arrow pointing clockwise. In the bottom-left corner, there are more faint circular lines and arrows.



Soldaatje

The background features a vertical gradient from light green at the top to dark blue at the bottom. It is decorated with faint, semi-transparent technical diagrams. On the right side, there is a large circular gauge with numerical markings from 80 to 200 and a needle pointing towards the 180 mark. Below it is another circular diagram with concentric circles and arrows. On the left side, there are partial circular diagrams with arrows, one of which is dashed.



The background is a blue gradient with faint technical diagrams and circular patterns. On the right side, there are several circular diagrams with concentric lines and arrows, resembling a technical drawing or a diagram of a circular component. The text "Hamster" is centered in the middle of the image.

Hamster



The background is a blue gradient with faint technical diagrams and circular patterns. On the right side, there are several circular gauges or dials with numerical scales (e.g., 100, 110, 120, 130, 140, 150, 160, 170, 180, 190, 200) and arrows. There are also dashed lines and solid lines forming various geometric shapes and paths.

Havik



Zwarte roodstaart

The background features a vertical gradient from light green at the top to dark blue at the bottom. It is decorated with faint, semi-transparent circular patterns and a large, detailed circular scale on the right side. The scale has numerical markings from 0 to 200 and includes concentric circles and arrows, suggesting a technical or scientific theme.



The background is a blue gradient with faint technical diagrams and circular patterns. On the right side, there is a large circular diagram with concentric circles and radial lines, resembling a gauge or a scale. The numbers 100, 110, 120, 130, 140, 150, 160, 170, 180, 190, and 200 are visible along the outer edge of this diagram. There are also several smaller circular diagrams scattered across the background, some with arrows indicating direction.

Fraai haarmos



Gewoon sterrenmos

The background features a vertical gradient from light green at the top to dark blue at the bottom. It is filled with a field of small, faint white and blue dots, resembling a starry sky. Overlaid on this are several technical diagrams in white and light blue. In the top right, there is a large circular gauge with concentric rings and numerical markings from 80 to 200. In the bottom right, there is a diagram with concentric circles and arrows indicating a clockwise direction. In the bottom left, there is a partial diagram with a dashed arrow pointing left. In the top left, there is a small circular diagram with a dashed arrow pointing left.



Kleine modderkruiper

The background features a vertical gradient from light green at the top to dark blue at the bottom. It is decorated with faint, semi-transparent technical diagrams, including circular gauges with numerical scales (e.g., 120, 130, 140, 150, 160, 170, 180, 190, 200) and arrows, suggesting a scientific or engineering context.



Moeraswolfsklaus

The background features a blue-to-green gradient with a subtle pattern of small white dots. Overlaid on this are several faint, semi-transparent technical diagrams. On the right side, there is a large circular gauge with concentric rings and numerical markings from 80 to 200. Below it is another circular diagram with dashed lines and arrows. In the bottom left corner, there are more circular diagrams, including one with a dashed arrow pointing left.



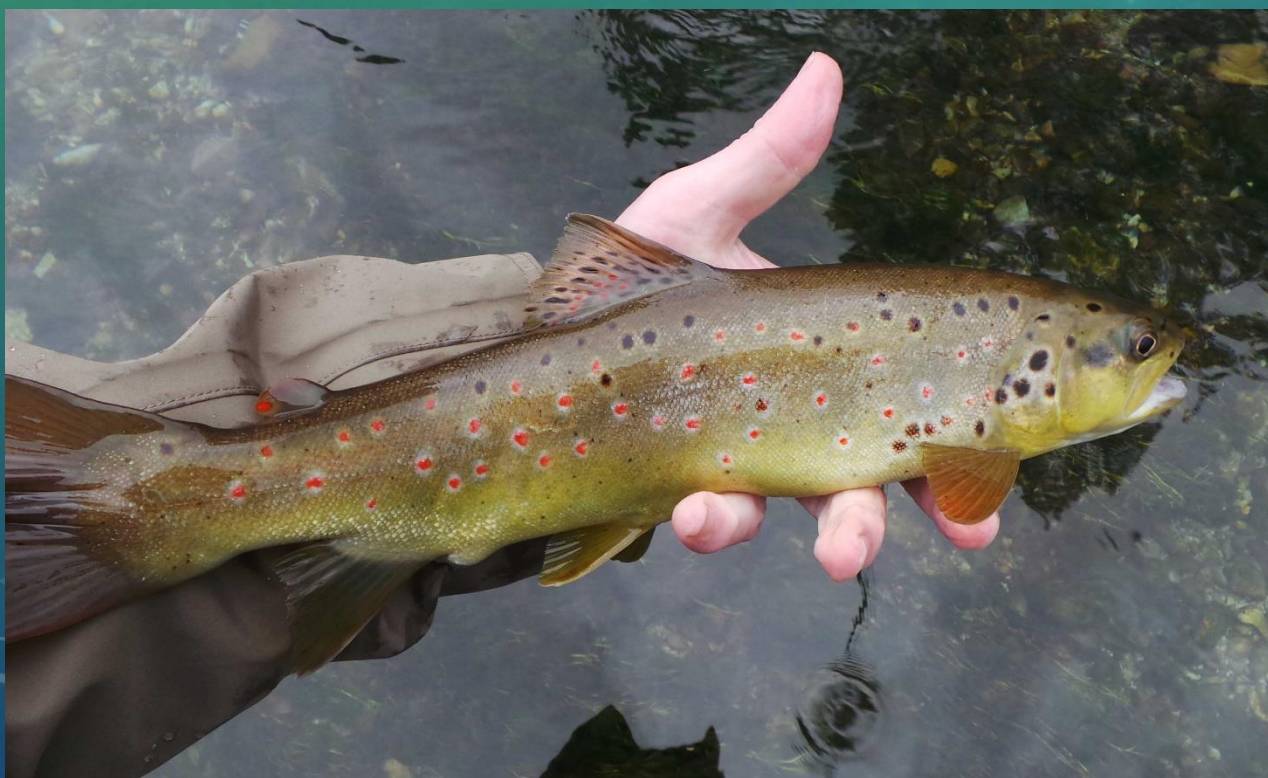
Ransuil





Paardenanemoon

The background features a vertical gradient from light green at the top to dark blue at the bottom. It is decorated with faint, semi-transparent technical diagrams, including circular gauges with numerical scales (e.g., 100, 110, 120, 130, 140, 150, 160, 170, 180, 190, 200) and arrows. A field of small, light-colored dots is scattered across the entire background, resembling a starry sky or a data visualization.





Forel



Beemdtkroon





Pontische rodondendron





The background is a blue gradient with faint technical diagrams and circular patterns. On the right side, there is a large circular diagram with concentric circles and radial lines, resembling a gauge or a scale. The numbers 100, 110, 120, 130, 140, 150, 160, 170, 180, 190, and 200 are visible along the outer edge of this diagram. There are also several smaller circular diagrams scattered across the background, some with arrows and dashed lines.

Bruine rat



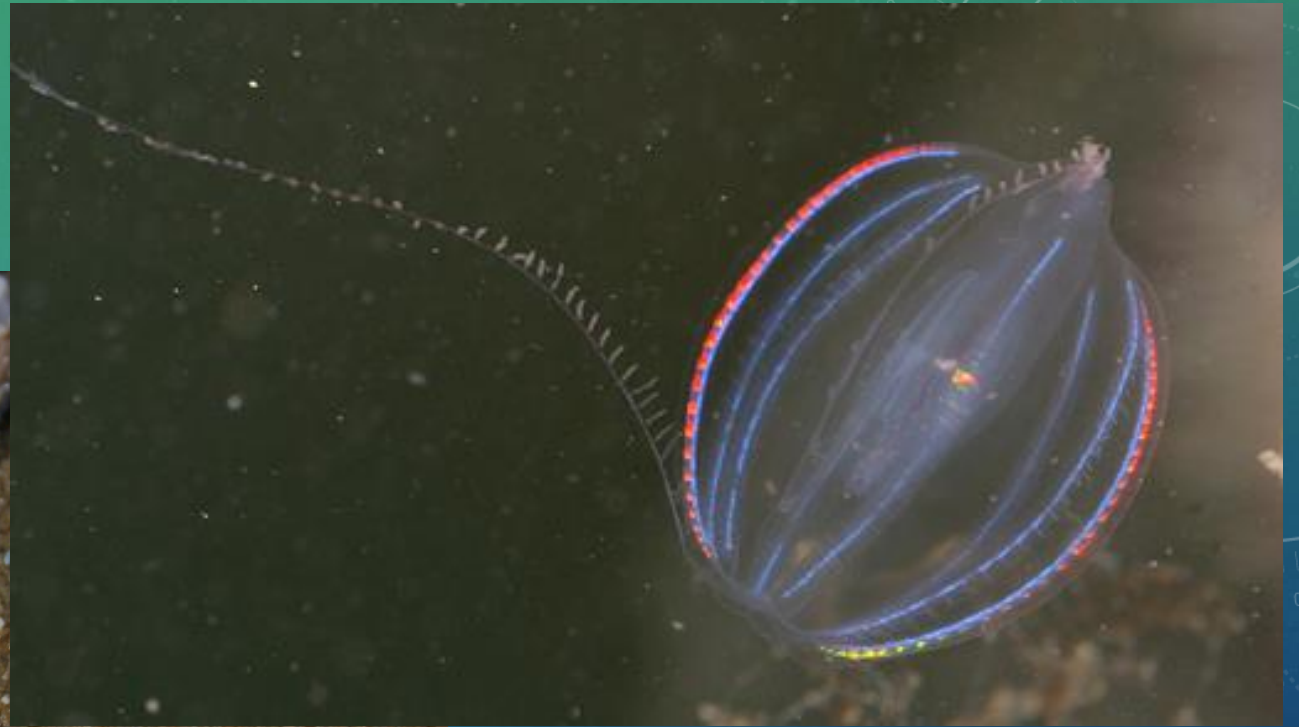
Groot duinsterretje

The background features a vertical gradient from light green at the top to dark blue at the bottom. It is decorated with faint, semi-transparent technical graphics, including circular gauges with numerical scales (e.g., 100, 110, 120, 130, 140, 150, 160, 170, 180, 190, 200) and dashed lines with arrows, suggesting a scientific or engineering theme.



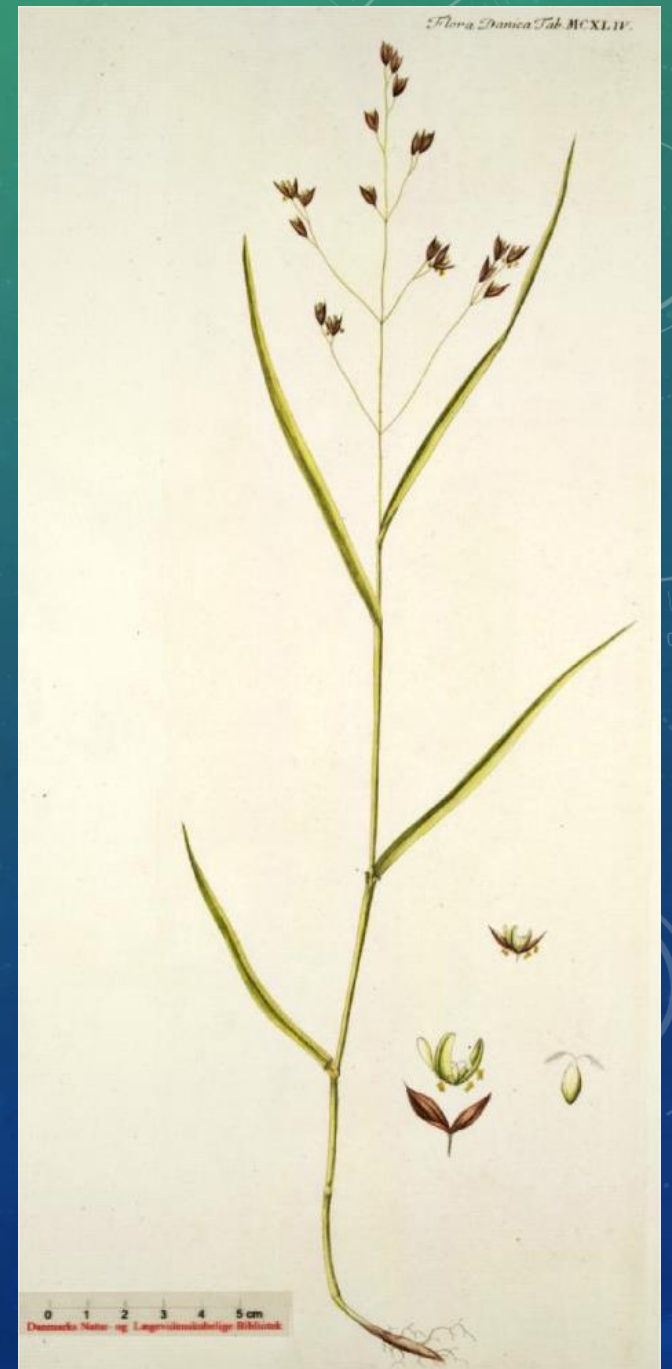
Boerenzwaluw

The background features a vertical gradient from light green at the top to dark blue at the bottom. It is decorated with faint, semi-transparent technical diagrams, including circular gauges with numerical scales (e.g., 100, 110, 120, 130, 140, 150, 160, 170, 180, 190, 200) and arrows. A field of small, white, star-like particles is scattered across the entire background.



Zeedruiifje

The background features a vertical gradient from light green at the top to dark blue at the bottom. It is decorated with faint, semi-transparent technical diagrams. On the right side, there is a large circular gauge with a scale from 0 to 200 and several concentric circles. On the left and bottom, there are smaller circular diagrams with arrows indicating clockwise or counter-clockwise rotation.



Eenbloemig parelgras

The background features a vertical gradient from light green at the top to dark blue at the bottom. It is decorated with faint, semi-transparent circular patterns and a large circular scale on the right side. The scale has numerical markings from 80 to 200 and a central circular element. There are also several smaller circular motifs scattered across the background, some with arrows indicating direction.



© Arie Ouwerkerk 2009

Gierzwaluw

The background features a vertical gradient from light green at the top to dark blue at the bottom. It is decorated with faint, semi-transparent technical diagrams, including circular gauges with numerical scales (e.g., 80, 90, 100, 110, 120, 130, 140, 150, 160, 170, 180, 190, 200) and arrows. There are also several small, glowing blue and white particles scattered across the field.



Grote wegslak

The background features a vertical gradient from light green at the top to dark blue at the bottom. It is decorated with faint, semi-transparent technical diagrams, including circular gauges with numerical scales (e.g., 80, 90, 100, 110, 120, 130, 140, 150, 160, 170, 180, 190, 200) and arrows, suggesting a scientific or engineering context.



Boompieper

The background features a vertical gradient from light green at the top to dark blue at the bottom. It is populated with small, glowing white and blue particles. Several technical diagrams are overlaid: a circular gauge with a scale from 80 to 200 and an arrow pointing left is in the top right; a circular diagram with concentric lines and arrows is in the bottom right; and a circular diagram with a dashed arrow is in the bottom left.



Knotswier

The background features a vertical gradient from light green at the top to dark blue at the bottom. It is decorated with faint, semi-transparent technical diagrams, including circular gauges with numerical scales (e.g., 100, 120, 140, 160, 180, 200) and arrows. A field of small, light-colored dots is scattered across the entire background, resembling a starry sky or a data visualization.





Gewone oester



The background is a blue gradient with faint technical diagrams and circular patterns. On the right side, there are several circular gauges or dials with numerical scales (e.g., 100, 110, 120, 130, 140, 150, 160, 170, 180, 190, 200) and arrows. There are also dashed lines and solid lines forming circles and arcs. The overall aesthetic is clean and modern, suggesting a technical or scientific theme.

Buizerd



The background is a blue gradient with faint technical diagrams and circular patterns. On the right side, there are several circular diagrams with concentric lines and arrows, resembling a technical drawing or a diagram of a circular component. The text "Zeelt" is centered in the middle of the image.

Zeelt



Geelgors

The background features a vertical gradient from light green at the top to dark blue at the bottom. It is decorated with faint, semi-transparent technical graphics, including circular gauges with numerical scales (e.g., 100, 120, 140, 160, 180, 200) and arrows, suggesting a scientific or engineering theme.



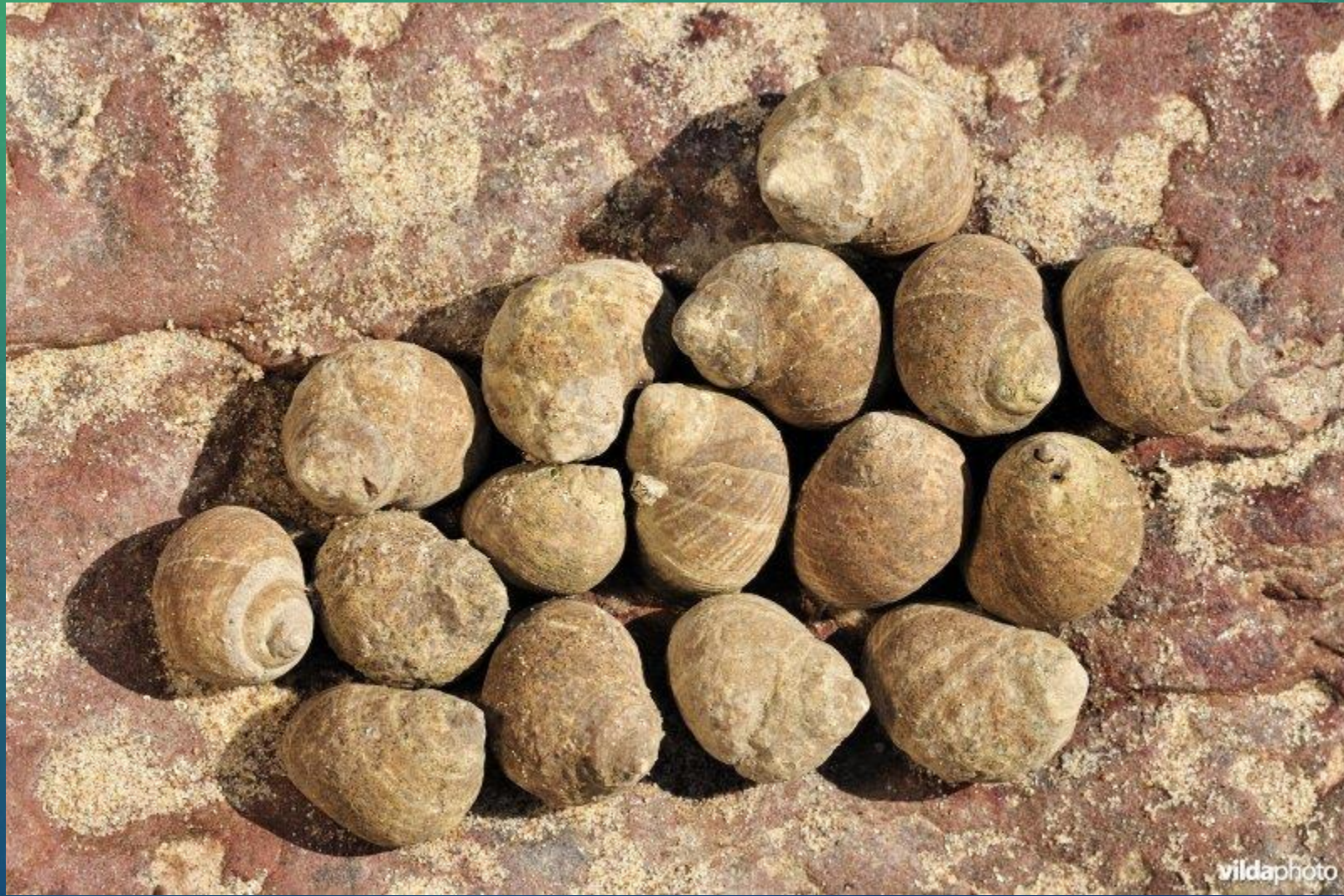
Reuzenpaardenstaart

The background features a vertical gradient from light green at the top to dark blue at the bottom. It is decorated with faint, semi-transparent circular patterns and a large circular scale on the right side. The scale has numerical markings from 0 to 200 in increments of 10. There are also several smaller circular elements, some with arrows, scattered across the background.



Lavendel

The background features a vertical gradient from light green at the top to dark blue at the bottom. It is decorated with faint, semi-transparent circular patterns and a large, detailed circular scale on the right side. The scale has numerical markings from 0 to 200 and includes concentric circles and arrows. The overall aesthetic is clean and modern, with a focus on geometric shapes and a cool color palette.



Gewone alikruik

The background features a vertical gradient from light green at the top to dark blue at the bottom. It is decorated with faint, semi-transparent technical diagrams, including circular gauges with numerical scales (e.g., 100, 110, 120, 130, 140, 150, 160, 170, 180, 190, 200) and arrows, suggesting a scientific or engineering context.



The background is a blue gradient with faint technical diagrams and circular patterns. On the right side, there are several circular gauges or dials with numerical scales (e.g., 100, 110, 120, 130, 140, 150, 160, 170, 180, 190, 200) and arrows. There are also dashed lines and other circular elements scattered across the background.

Baars



© Tilly Kester



Schaafstro

The background features a vertical gradient from light green at the top to dark blue at the bottom. It is populated with numerous small, glowing white and blue particles. On the right side, there are several technical diagrams: a large circular gauge with numerical markings from 80 to 200, a smaller circular gauge with a dashed outer ring and a solid inner ring, and a circular arrow diagram. In the bottom left corner, there is a partial view of a circular arrow diagram.



The background is a blue gradient with faint technical diagrams and circular patterns. On the right side, there are several circular gauges or dials with numerical scales (e.g., 100, 110, 120, 130, 140, 150, 160, 170, 180, 190, 200) and arrows. There are also dashed lines and solid lines forming various geometric shapes and paths. The overall aesthetic is clean and modern, suggesting a technical or scientific theme.

Bosrank



Grote ratelaar

The background features a vertical gradient from light green at the top to dark blue at the bottom. It is decorated with faint, semi-transparent technical diagrams. On the right side, there is a large circular gauge with numerical markings from 80 to 200 and a needle pointing towards the 180 mark. Below it is another circular diagram with concentric circles and arrows. On the left side, there are partial views of similar circular diagrams.





Sperwer



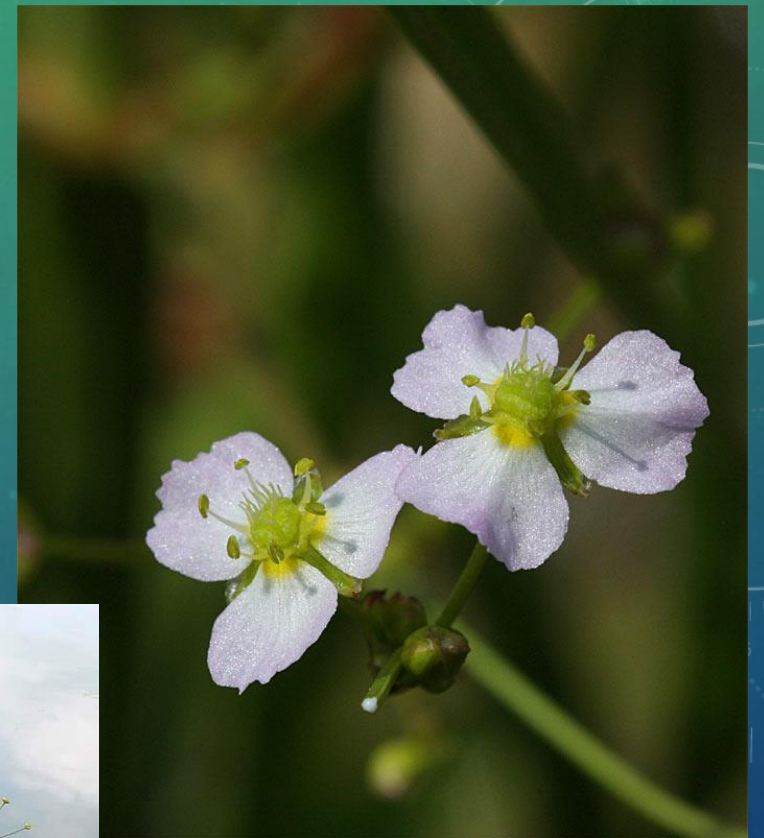
Grote egelskop

The background features a vertical gradient from light green at the top to dark blue at the bottom. It is decorated with faint, semi-transparent technical diagrams, including circular gauges with numerical scales (e.g., 80, 90, 100, 110, 120, 130, 140, 150, 160, 170, 180, 190, 200) and arrows, suggesting a scientific or engineering context.

Tafel 1.



Echter Froschlöffel, *Alisma Michaletii*.



Grote waterweegbree

The background features a vertical gradient from light green at the top to dark blue at the bottom. It is decorated with faint, semi-transparent technical diagrams, including circular gauges with numerical scales (e.g., 140, 150, 160, 170, 180, 190, 200) and arrows, suggesting a scientific or engineering context.



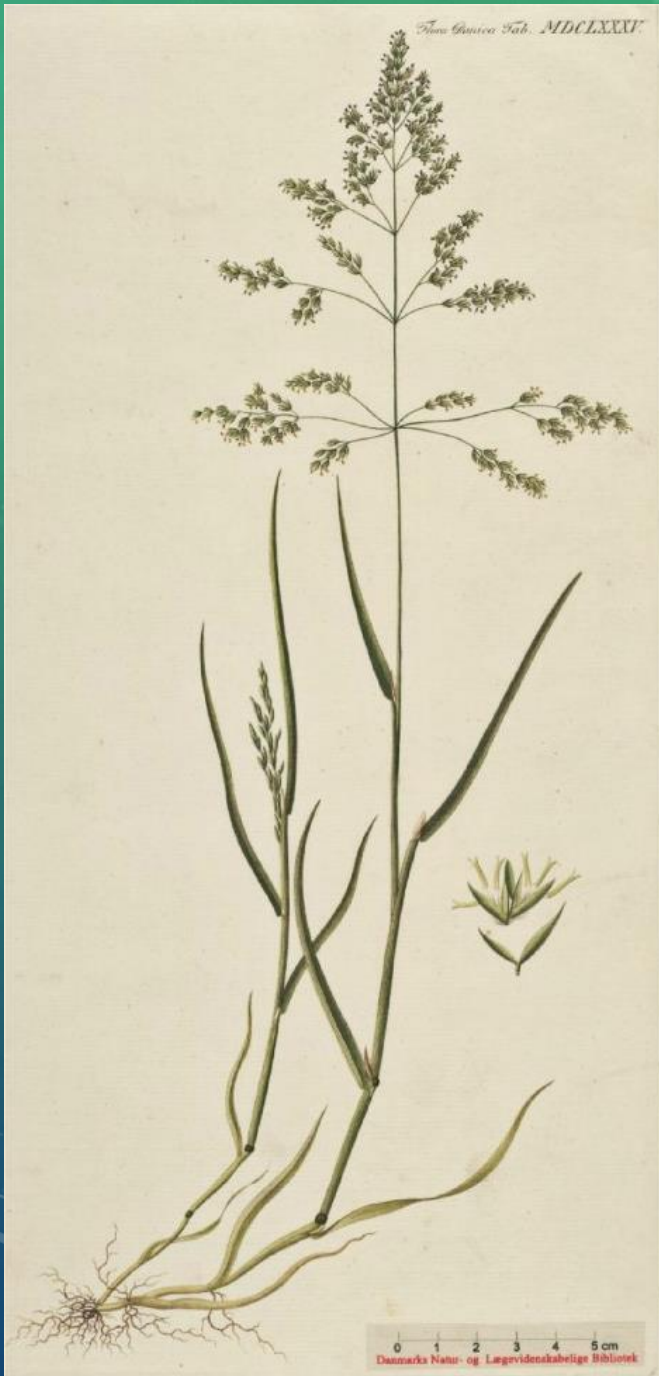
Gaffeltand

The background features a vertical gradient from light green at the top to dark blue at the bottom. It is decorated with faint, semi-transparent technical diagrams. On the right side, there are two circular gauges or dials with numerical scales (e.g., 80, 90, 100, 110, 120, 130, 140, 150, 160, 170, 180, 190, 200) and arrows. On the left side, there are dashed circular paths with arrows indicating direction. The overall aesthetic is clean and technical.



Grote bonte specht

The background features a vertical gradient from light green at the top to dark blue at the bottom. It is decorated with faint, semi-transparent circular patterns and a large, detailed circular scale on the right side. The scale has numerical markings from 0 to 200 and includes concentric circles and arrows. The text 'Grote bonte specht' is centered in a large, black, sans-serif font.



Beemdgras

The background features a vertical gradient from light green at the top to dark blue at the bottom. It is decorated with faint, semi-transparent technical diagrams. On the right side, there is a large circular gauge with numerical markings from 80 to 200 and a dashed arrow pointing counter-clockwise. Below it is another circular diagram with concentric circles and a dashed arrow. On the left side, there are smaller circular diagrams, one with a dashed arrow pointing clockwise and another with a solid arrow pointing clockwise.



Parapluutjesmos

The background features a vertical gradient from light green at the top to dark blue at the bottom. It is decorated with faint, semi-transparent technical diagrams, including circular gauges with numerical scales (e.g., 100, 110, 120, 130, 140, 150, 160, 170, 180, 190, 200) and arrows. A field of small, light-colored stars is scattered across the entire background.



Beemdlangbloem

The background features a vertical gradient from light green at the top to dark blue at the bottom. It is decorated with faint, semi-transparent technical diagrams, including circular gauges with numerical scales (e.g., 80, 90, 100, 110, 120, 130, 140, 150, 160, 170, 180, 190, 200) and various circular patterns with arrows, suggesting a scientific or engineering theme.



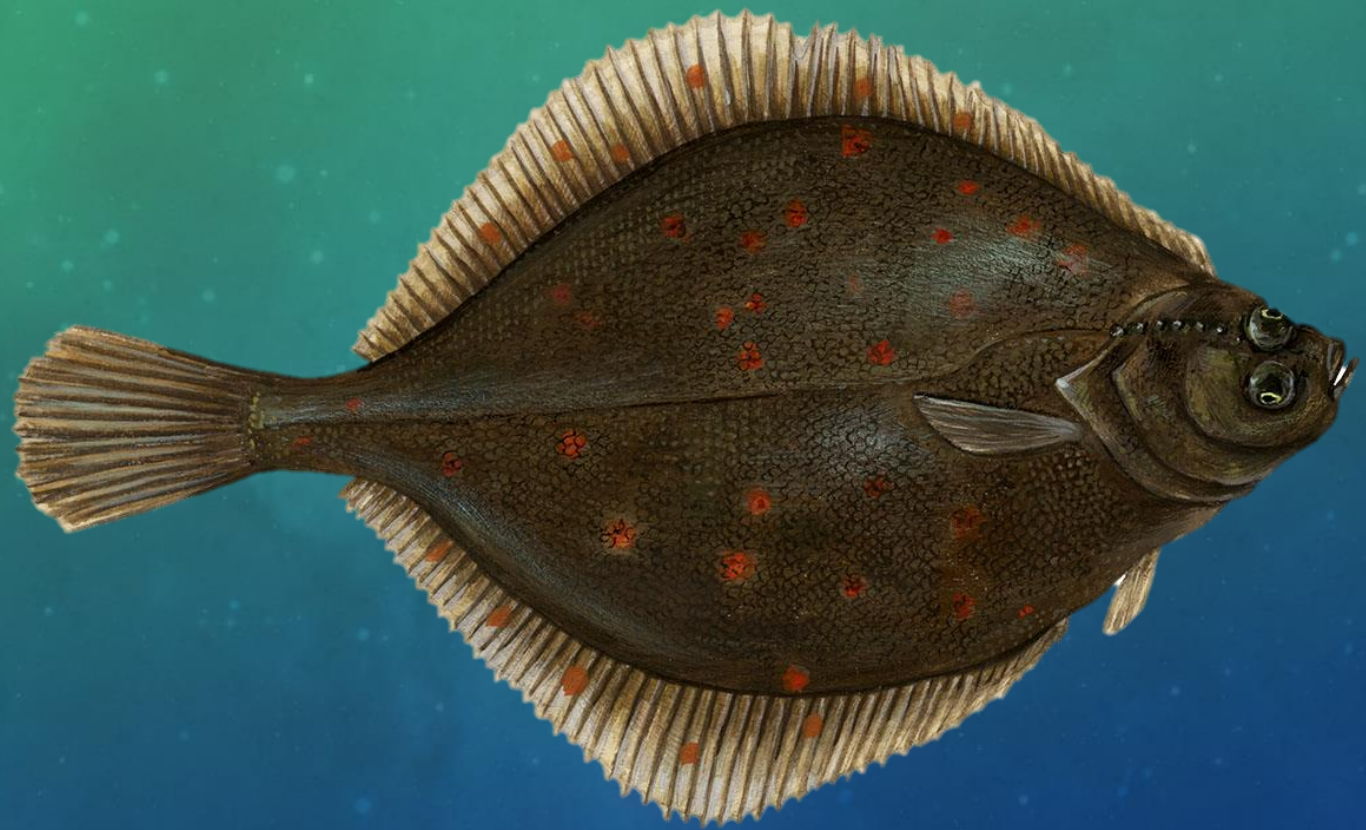
Roodborsttapuit

The background features a vertical gradient from light green at the top to dark blue at the bottom. It is decorated with faint, semi-transparent technical diagrams. On the right side, there are two circular gauges with numerical scales (80, 90, 100, 110, 120, 130, 140, 150, 160, 170, 180, 190, 200) and arrows. On the left and bottom, there are dashed circular paths with arrows indicating direction.



Kabeljauw

The background features a vertical gradient from light green at the top to dark blue at the bottom. It is decorated with faint, semi-transparent technical diagrams. On the right side, there are two circular gauges or dials with numerical scales (0 to 200) and arrows. On the left and bottom, there are dashed circular paths with arrows indicating direction.





Schol



Kleine ratelaar

The background features a vertical gradient from light green at the top to dark blue at the bottom. It is decorated with faint, semi-transparent technical diagrams, including circular gauges with numerical scales (e.g., 80, 90, 100, 110, 120, 130, 140, 150, 160, 170, 180, 190, 200) and various circular patterns with arrows, suggesting a scientific or engineering theme.



Heidekartelblad





Eikvaren

The background features a vertical gradient from light green at the top to dark blue at the bottom. It is decorated with faint, semi-transparent technical diagrams. On the right side, there are two circular gauges with numerical scales (0 to 200) and arrows. On the left and bottom, there are dashed circular paths with arrows indicating direction.





Veenmos



The background is a blue gradient with faint technical diagrams and circular patterns. On the right side, there are several circular gauges or dials with numerical scales (e.g., 0, 80, 100, 110, 120, 130, 140, 150, 160, 170, 180, 190, 200) and arrows. There are also dashed lines and solid lines forming various geometric shapes and paths.

Slobeeend



Duifkruid

The background features a vertical gradient from light green at the top to dark blue at the bottom. It is decorated with faint, semi-transparent technical graphics, including circular gauges with numerical scales (e.g., 80, 90, 100, 110, 120, 130, 140, 150, 160, 170, 180, 190, 200) and dashed lines with arrows, suggesting a scientific or engineering theme.



Grote wolfsklaww





Oorkwal

The background features a vertical gradient from light green at the top to dark blue at the bottom. It is decorated with faint, semi-transparent technical diagrams. On the right side, there are two circular gauges with numerical scales (0 to 200) and arrows. On the left and bottom, there are partial views of circular diagrams with arrows, suggesting a technical or scientific theme.



© Ron Poot



Wikipedia

Bospaardenstaart





Klauwtjesmos





Lidrus



Asgrauwe keverslak

The background features a vertical gradient from light green at the top to dark blue at the bottom. It is decorated with faint, semi-transparent technical drawings, including circular gauges with numerical scales (e.g., 100, 120, 140, 160, 180, 190, 200) and arrows, suggesting a scientific or engineering context.



Huiszwaluw

The background features a vertical gradient from light green at the top to dark blue at the bottom. It is decorated with faint, semi-transparent technical diagrams. On the right side, there is a large circular gauge with numerical markings from 80 to 200 and a central needle. Below it is another circular diagram with concentric circles and arrows. On the left side, there are smaller circular diagrams, one with a dashed arrow pointing left and another with a solid arrow pointing right.



Purperslak

The background features a vertical gradient from light green at the top to dark blue at the bottom. It is decorated with faint, semi-transparent technical diagrams. On the right side, there is a large circular gauge with a scale from 0 to 200 and a needle pointing towards 180. Below it is another circular diagram with concentric circles and arrows. On the left side, there are smaller circular diagrams, including one with a dashed arrow pointing left.



© Jelger Herder

Grote modderkruiper

The background features a vertical gradient from light green at the top to dark blue at the bottom. It is decorated with faint, semi-transparent technical diagrams, including circular gauges with numerical scales (e.g., 100, 110, 120, 130, 140, 150, 160, 170, 180, 190, 200) and arrows, suggesting a scientific or engineering context.



Kerkuil

The background features a vertical gradient from light green at the top to dark blue at the bottom. It is populated with small, glowing white and blue particles. On the right side, there are several technical diagrams: a large circular gauge with a scale from 80 to 200 and a white needle pointing to approximately 190; a smaller circular gauge below it with a scale from 0 to 100 and a white needle pointing to approximately 80; and a dashed circular arrow in the bottom right corner. In the bottom left corner, there are two concentric white circles with a dashed arrow pointing counter-clockwise.



Strandkrab

The background features a vertical gradient from light green at the top to dark blue at the bottom. It is decorated with faint, semi-transparent technical diagrams. On the right side, there is a large circular gauge with a scale from 0 to 200 and a needle pointing towards 180. Below it is another circular diagram with concentric circles and arrows. On the left side, there are smaller circular diagrams, one with a dashed arrow pointing left and another with a solid arrow pointing right.



© Greet Kok



Bruine of basterzandloopkever



Groot heksenkruid

The background features a vertical gradient from light green at the top to dark blue at the bottom. It is decorated with faint, semi-transparent circular patterns and a large circular scale on the right side. The scale has numerical markings from 80 to 200 and includes arrows indicating direction. The overall aesthetic is clean and modern.



Japanse oester



Oeverzwaluw

The background features a vertical gradient from light green at the top to dark blue at the bottom. It is decorated with faint, semi-transparent technical diagrams, including circular gauges with numerical scales (e.g., 80, 90, 100, 110, 120, 130, 140, 150, 160, 170, 180, 190, 200) and arrows, suggesting a scientific or engineering theme.